

D & D PRODUCTION INC.®

ASSEMBLY NO. 542038B-00-84SL

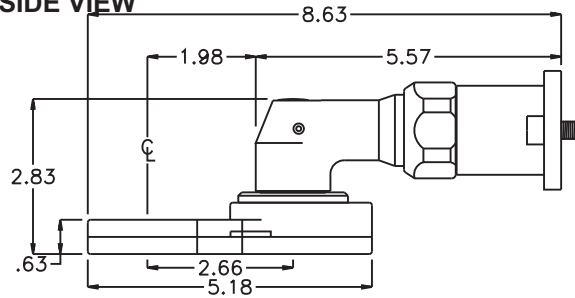
HEAD NO. 8709

TUBENUT ASS'Y
Rev. B
02-26-09

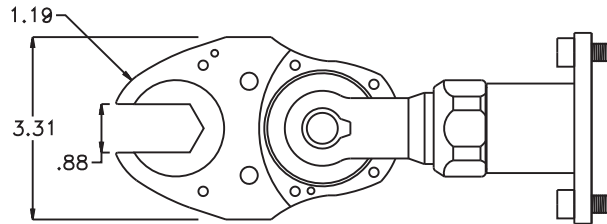
2500 WILLIAMS DRIVE • WATERFORD, MI • 48328

PHONE : (248) 334-2112 • FAX : (248) 334-0062

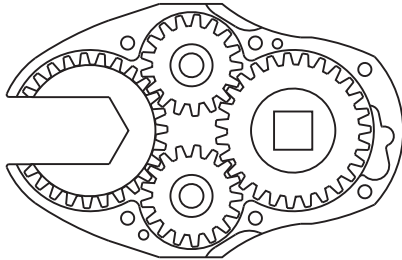
SIDE VIEW



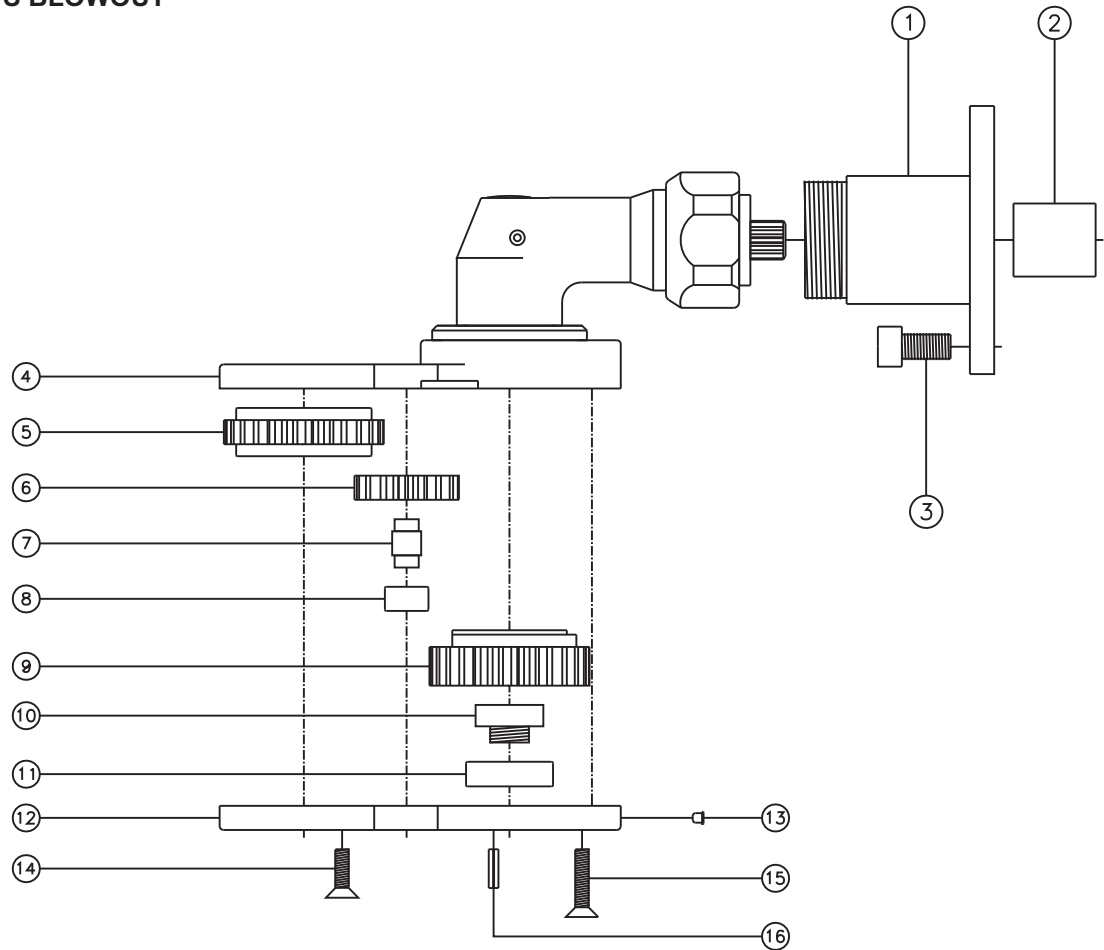
TOP VIEW



GEAR ASSEMBLY



PARTS BLOWOUT



ITEM	DESCRIPTION	PART NO.	ITEM	DESCRIPTION	PART NO.	ITEM	DESCRIPTION	PART NO.
1	Motor Coupling	MC-SP2-IR8	11	Needle Bearing	B-146			
2	Drive Shaft	DS-S08F3426	12	Gear Housing (Bottom)	542038B-00-P			
3	Screw #1 (2)	S-8MX16SH	13	Grease Fitting	1877			
4	Gear Hsg./Angle Hd. Assy.	542038B-00-H	14	Screw #2 (2)	S-1010			
5	Socket Gear, 22mm	142720-1-84SL	15	Screw #3 (4)	S-1014			
6	Idler Gear (2)	141710	16	Roll Pin (2)	RP-808			
7	Idler Pin (2)	IP-6520						
8	Needle Bearing (2)	B-65						
9	Drive Cam Gear	142723-38SD						
10	Drive Cam Pin	TP-14616B						