

D & D PRODUCTION INC.

ASSEMBLY NO. 201413-2

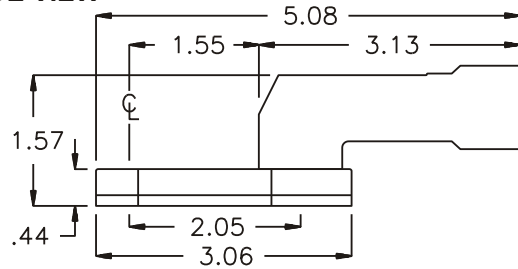
HEAD NO. 2105

CROWFOOT ASS'Y
Rev. C
03-08-94

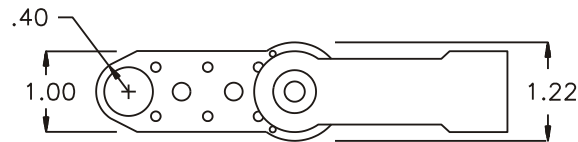
2500 WILLIAMS DRIVE • WATERFORD, MI • 48328

PHONE : (248) 334-2112 • FAX : (248) 334-0062

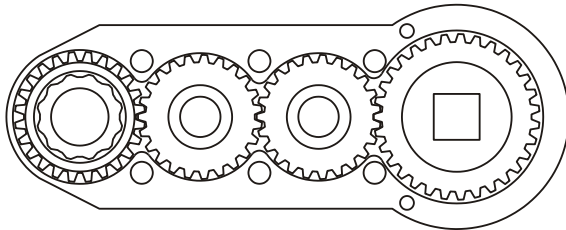
SIDE VIEW



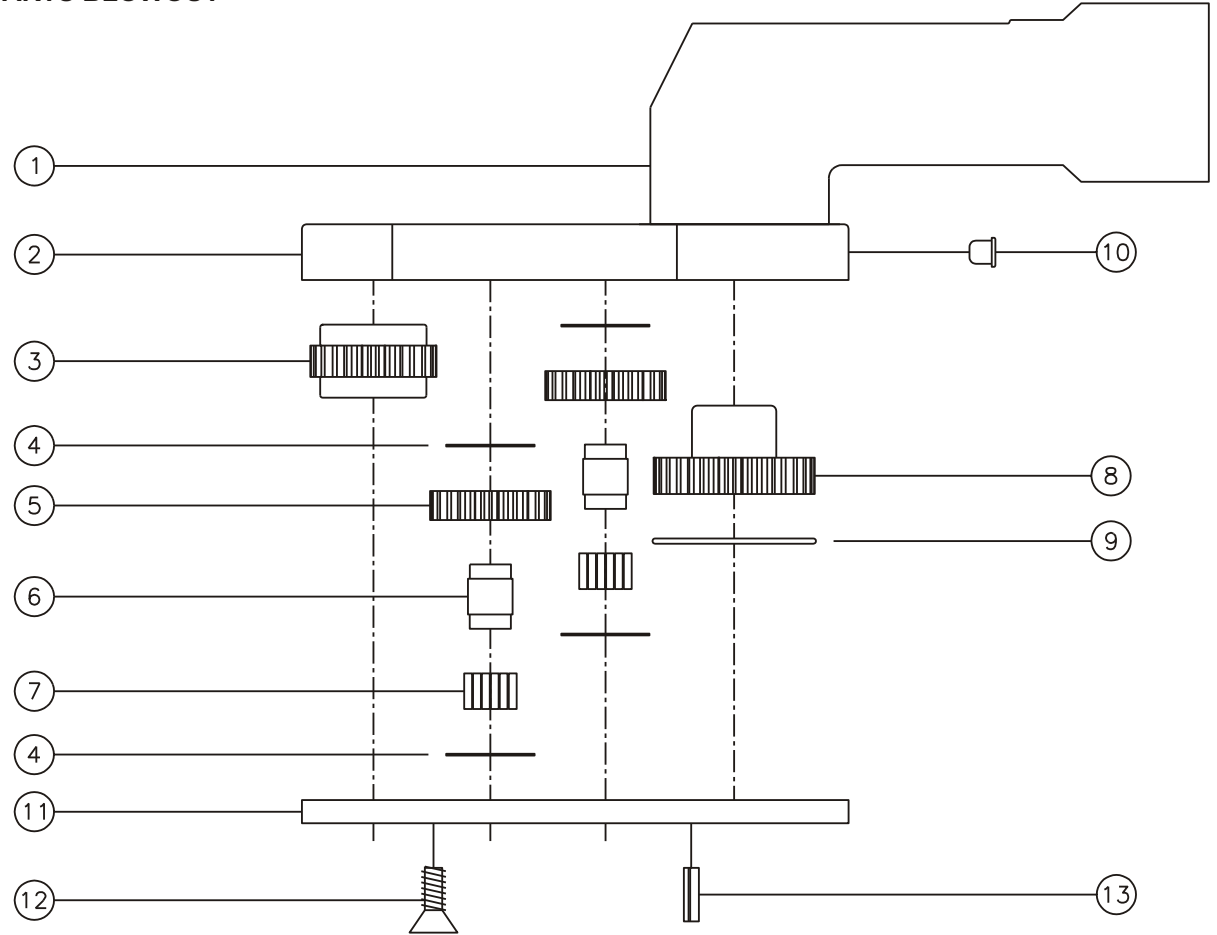
TOP VIEW



GEAR ASSEMBLY



PARTS BLOWOUT



| ITEM | DESCRIPTION | PART NO. | ITEM | DESCRIPTION | PART NO. | ITEM | DESCRIPTION | PART NO. |
|------|----------------------|------------|------|--------------|------------|------|-------------|----------|
| 1 | Angle Head | Cleco #8 | 11 | Bottom Plate | 201413-2-P | | | |
| 2 | Gear Housing | 201413-2-H | 12 | Screw (6) | S-806 | | | |
| 3 | Socket Gear | 362413-XX | 13 | Roll Pin (2) | RP-505 | | | |
| 4 | Thrust Race (4) | TRA-010 | | | | | | |
| 5 | Idler Gear (2) | 362305 | | | | | | |
| 6 | Idler Pin (2) | IP-0414 | | | | | | |
| 7 | Bearing Needles (34) | N-5605 | | | | | | |
| 8 | Drive Gear | 363112-SD | | | | | | |
| 9 | Thrust Race | TRA-815 | | | | | | |
| 10 | Grease Fitting | 1877 | | | | | | |